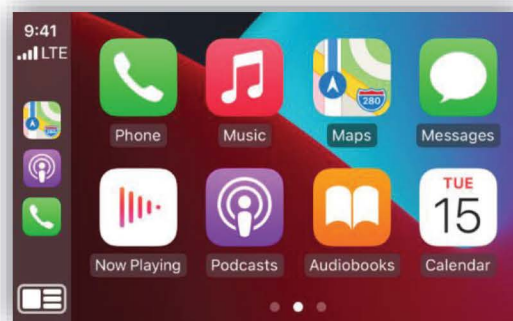
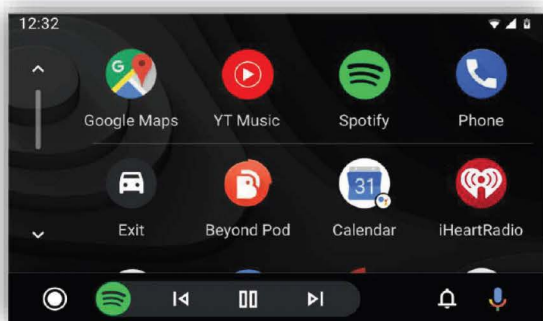


# IT2-BNT



*CarPlay/Android Auto integration system for '12-'18 Bentley vehicles*



1080 Holland Drive, Boca Raton, FL 33487 | 929-220-1212

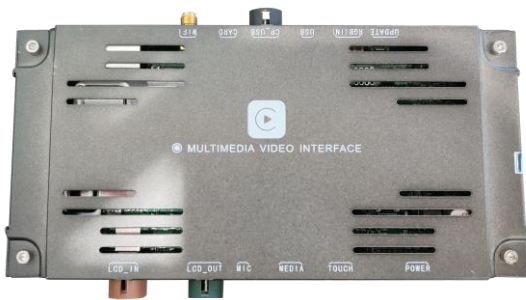
# IT2-BNT Overview



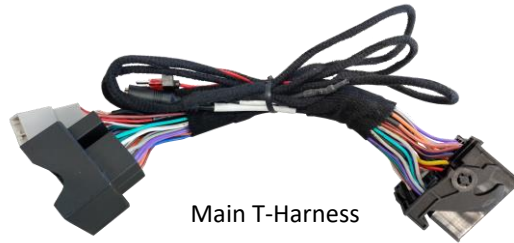
Thank you for purchasing a genuine ZZ-2 CarPlay/Android Auto interface – the highest quality smartphone integration system on the market! We guarantee your satisfaction with this OE integration provided it is installed & used properly. Each kit has been specifically designed to work in the most logical way possible using OE controls. Due to the large variety of vehicle entertainment systems, some limitations will apply.

*This kit requires professional installation and disassembly of the radio to manipulate delicate electronic parts. Only a qualified, trained technician should attempt to install this kit.*

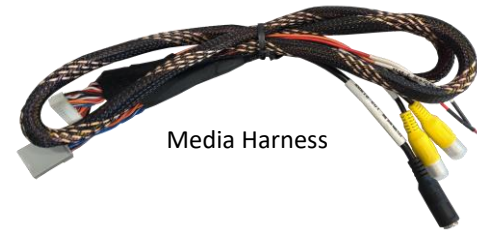
## KIT COMPONENTS



ZZPlay Interface (IT2)



Main T-Harness



Media Harness



Cable



USB INPUT  
Cable



Push Button  
switch



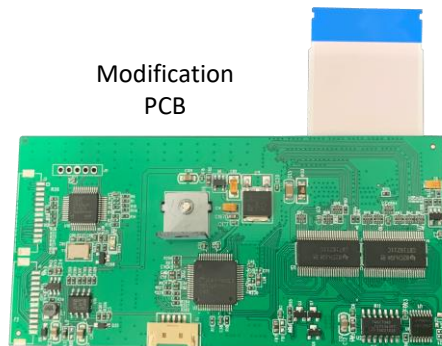
Touch/Video  
Cable



Microphone



USB Adapter  
(updates)



Modification  
PCB



BT/WIFI  
Antenna (SMB)



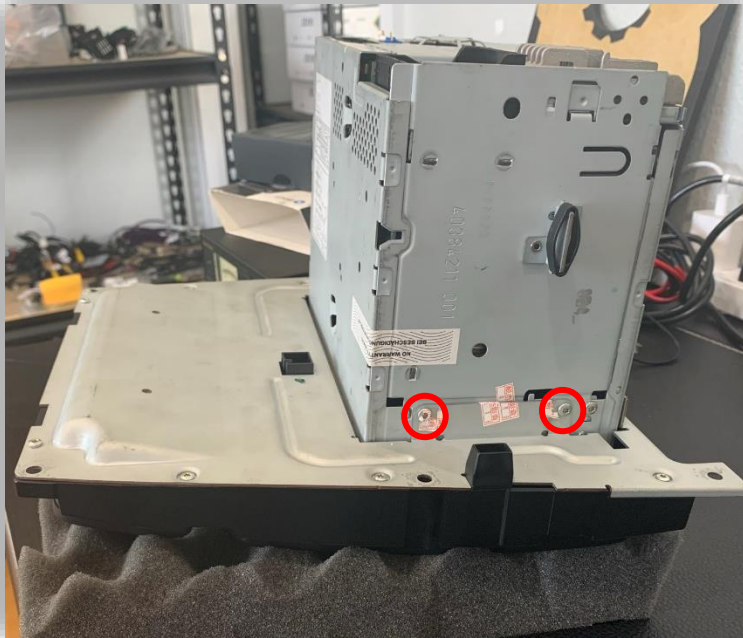
(1x) PCB  
Stand-off

# IT2-BNT Radio Modification



Remove the radio from the dashboard carefully and bring to a bench top. Lay face down on to a protective mat or foam to avoid scratches or damage.

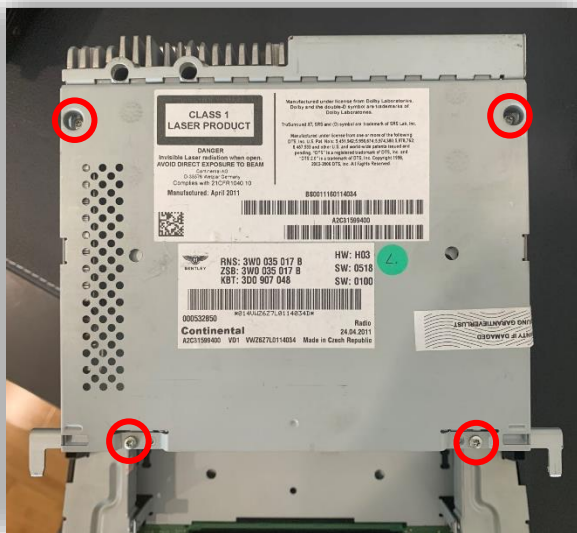
2. Begin by removing (4) Torx T10 screws, (2) on each side securing the back half of the radio to the face.



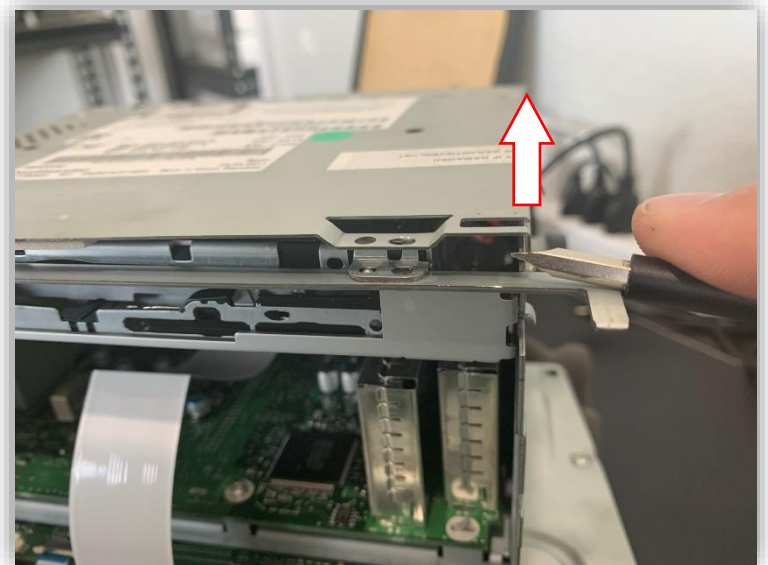
1. After the screws have been removed, lift the back half of the radio **upwards** (ribbons are still **attached!**) and lay flat onto the face side like shown.



4. On top of the radio, remove (4) Torx T8 screws.



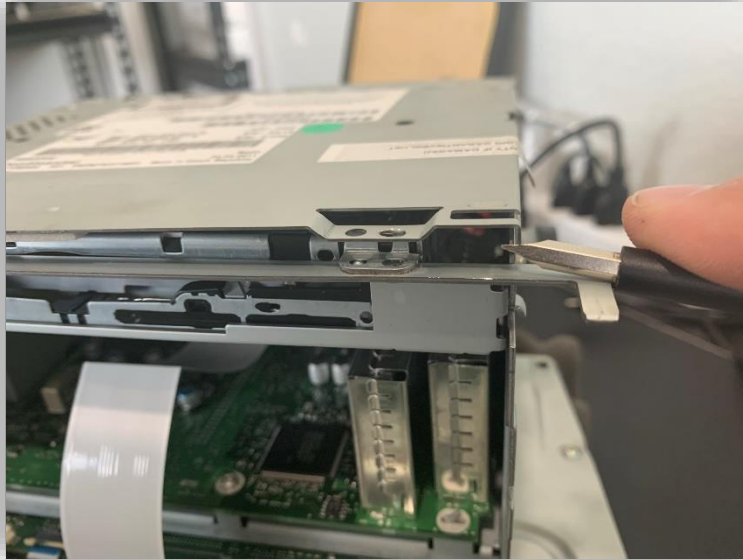
5. With a flathead screwdriver, pry the metal lid on top of the radio off and set aside.



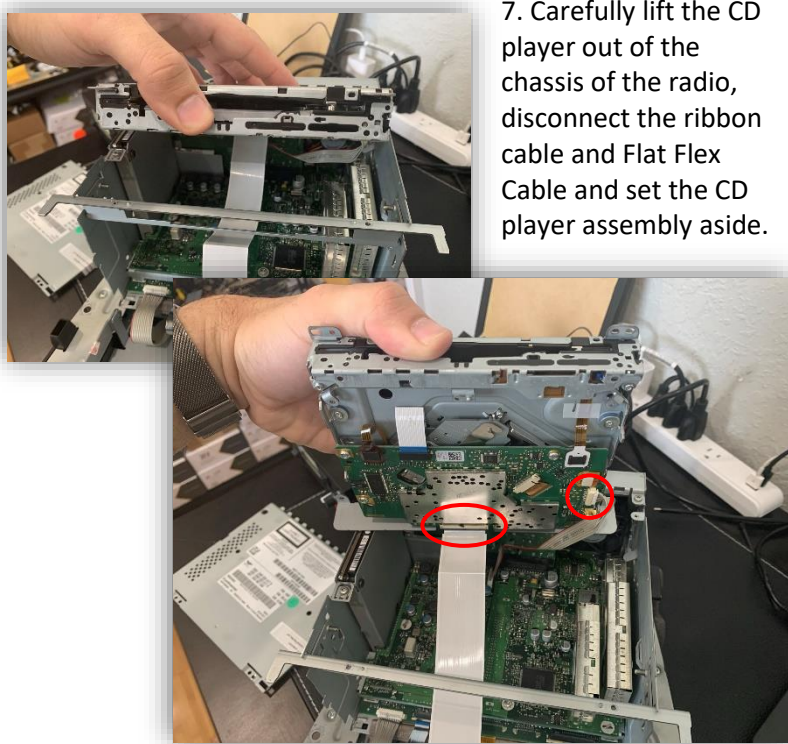
# IT2-BNT Radio Modification



- 6. With a flathead screwdriver, pry the metal lid on top of the radio off and set aside.



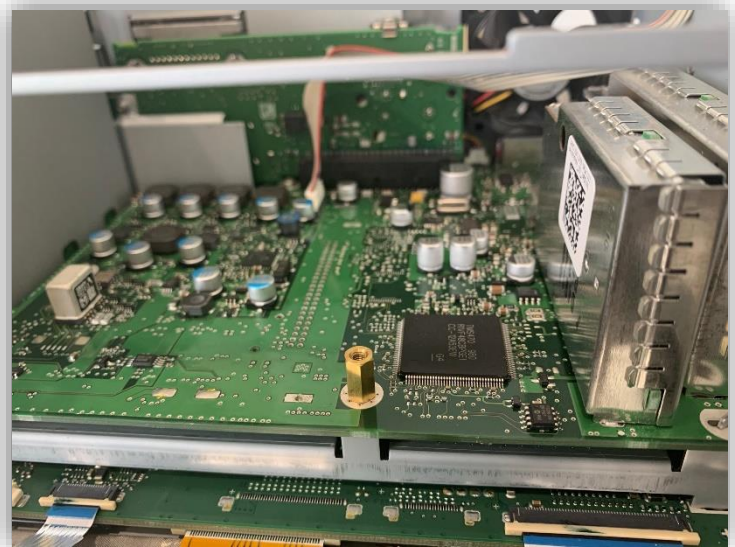
- 7. Carefully lift the CD player out of the chassis of the radio, disconnect the ribbon cable and Flat Flex Cable and set the CD player assembly aside.



- 8. Remove (1) Torx T10 screw shown below (do not discard!):



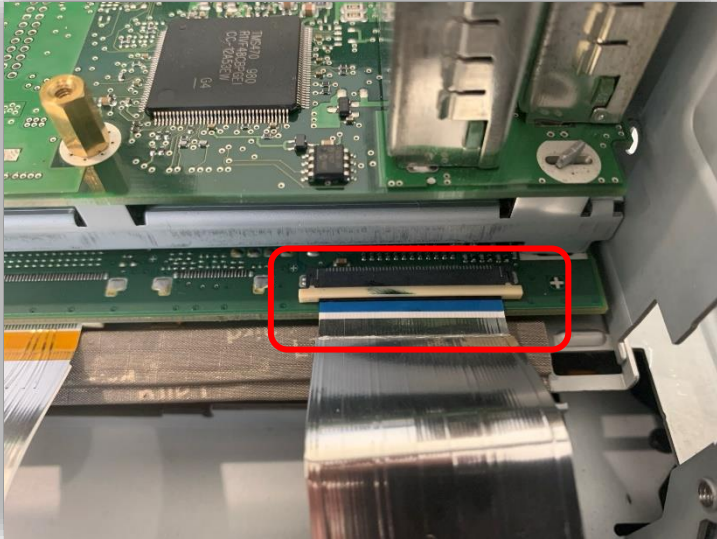
- 9. Replace the screw (just removed) with the provided stand-off.



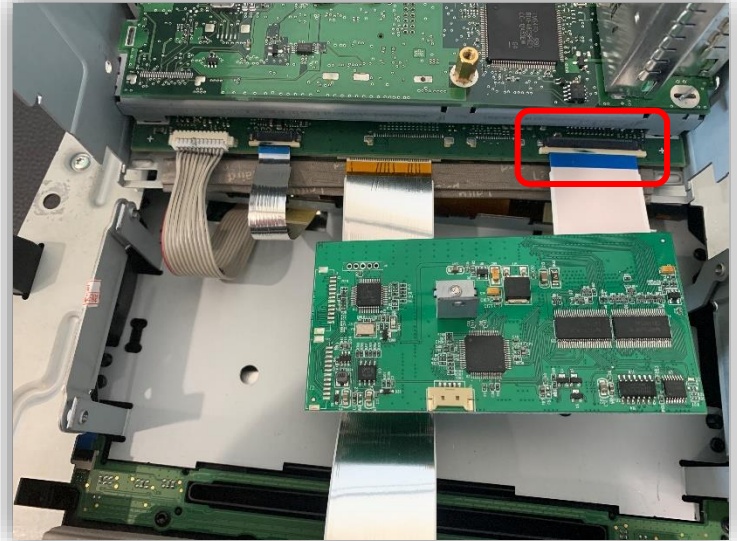
# IT2-BNT Radio Modification



10. Disconnect the OE (silver) FFC from its connector. *This FFC connector slides straight out (towards the ribbon), it does not pry upwards!*



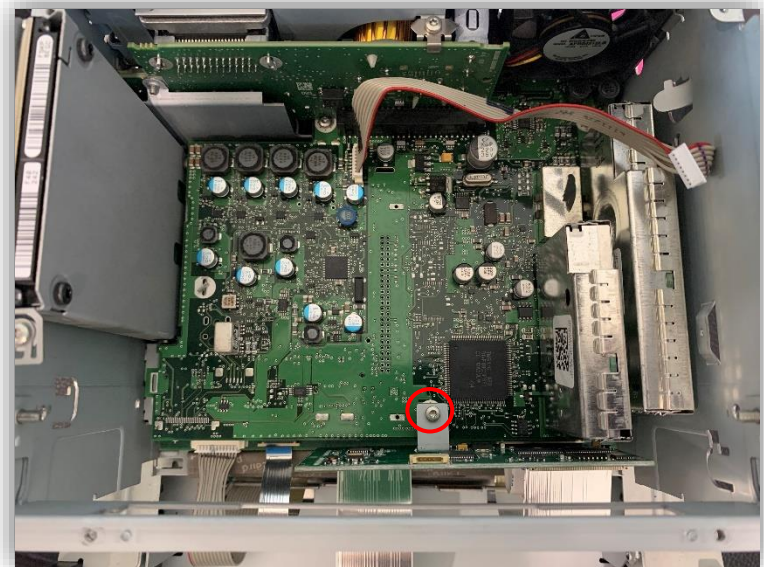
11. Grab the provided Mod-PCB. The ribbon cable should already be connected. Connect the free end of the FFC to the OE (radio side) connector (replacing the ribbon from step 10).



12. Flip the Mod-PCB over and connect the OE (silver) FFC (from step 10) to the free connector. *This FFC connector flips up, it does not pull out straight!*



13. Mount the PCB using the screw removed previously (step 8) to the installed stand-off (step 9).



# IT2-BNT Radio Modification



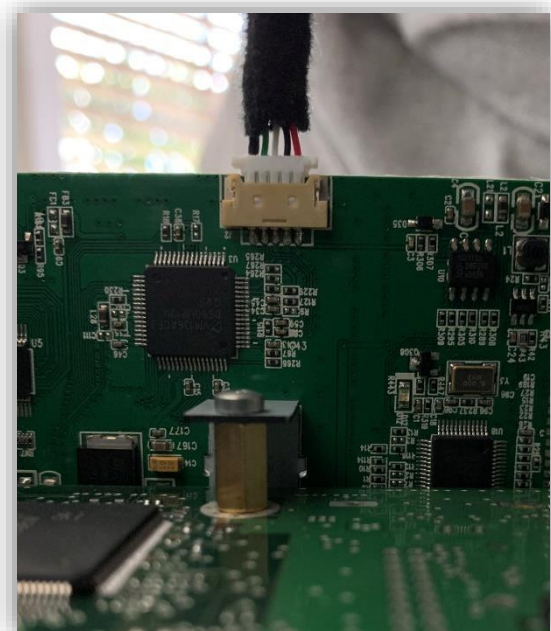
14. Using a step bit or 1/4" drill bit, drill a hole in the vents on the top metal piece of the radio. Be certain to do this away from the radio and once complete, remove and metal burrs so as not to damage the radio.



15. Run the provided Touch/Video cable through this hole and down to the Mod-PCB previously installed.



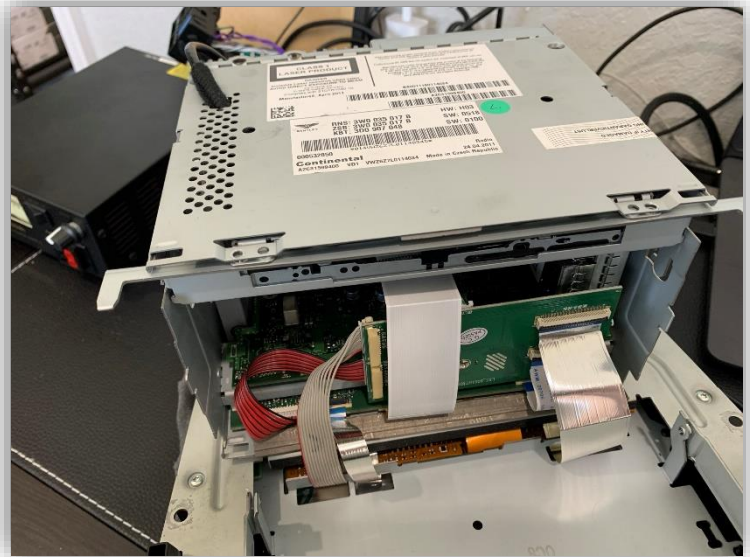
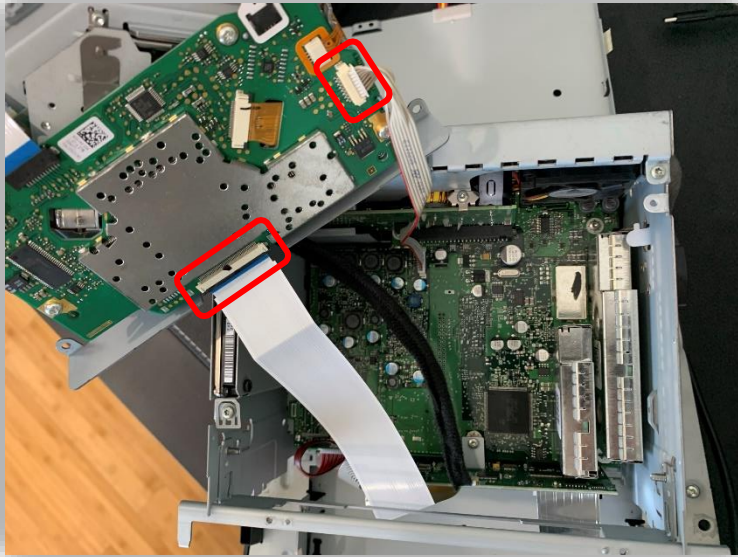
16. Run the Touch/Video Cable down to the Mod-PCB leaving some slack for the CD player space. Note the orientation of the connector – it will only connect properly ONE way. *The metal pins should be showing as you insert this connector.*



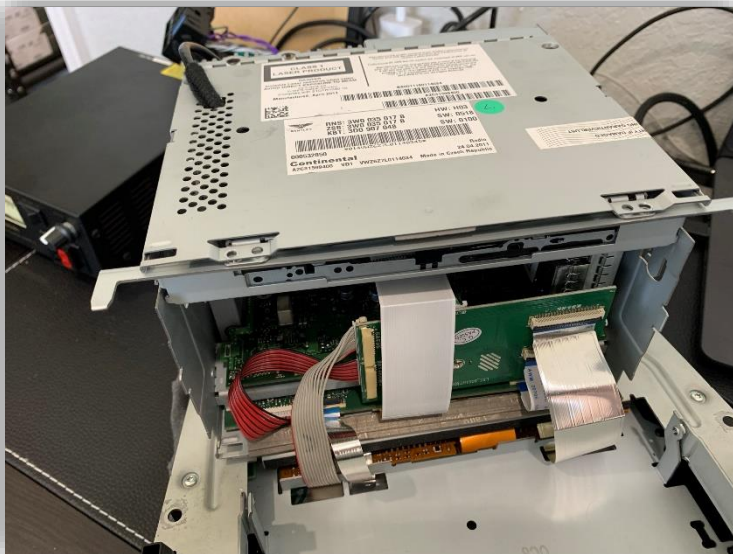
# IT2-BNT Radio Modification



17. Reconnect the CD player's ribbon cables (circled below). Carefully replace the CD assembly back on to the radio chassis and replace the top metal panel and (4) screws.



18. Zip-tie down the Touch/Video cable as you see fit to prevent pulling or snagging. Carefully replace the radio chassis to the front face and replace (4) screws. Connect the cable to the 'LCD OUT' port on the interface. If all was completed successfully and the rest of the kit was installed, you should be nearly complete.



# IT2-BNT Installation Diagram

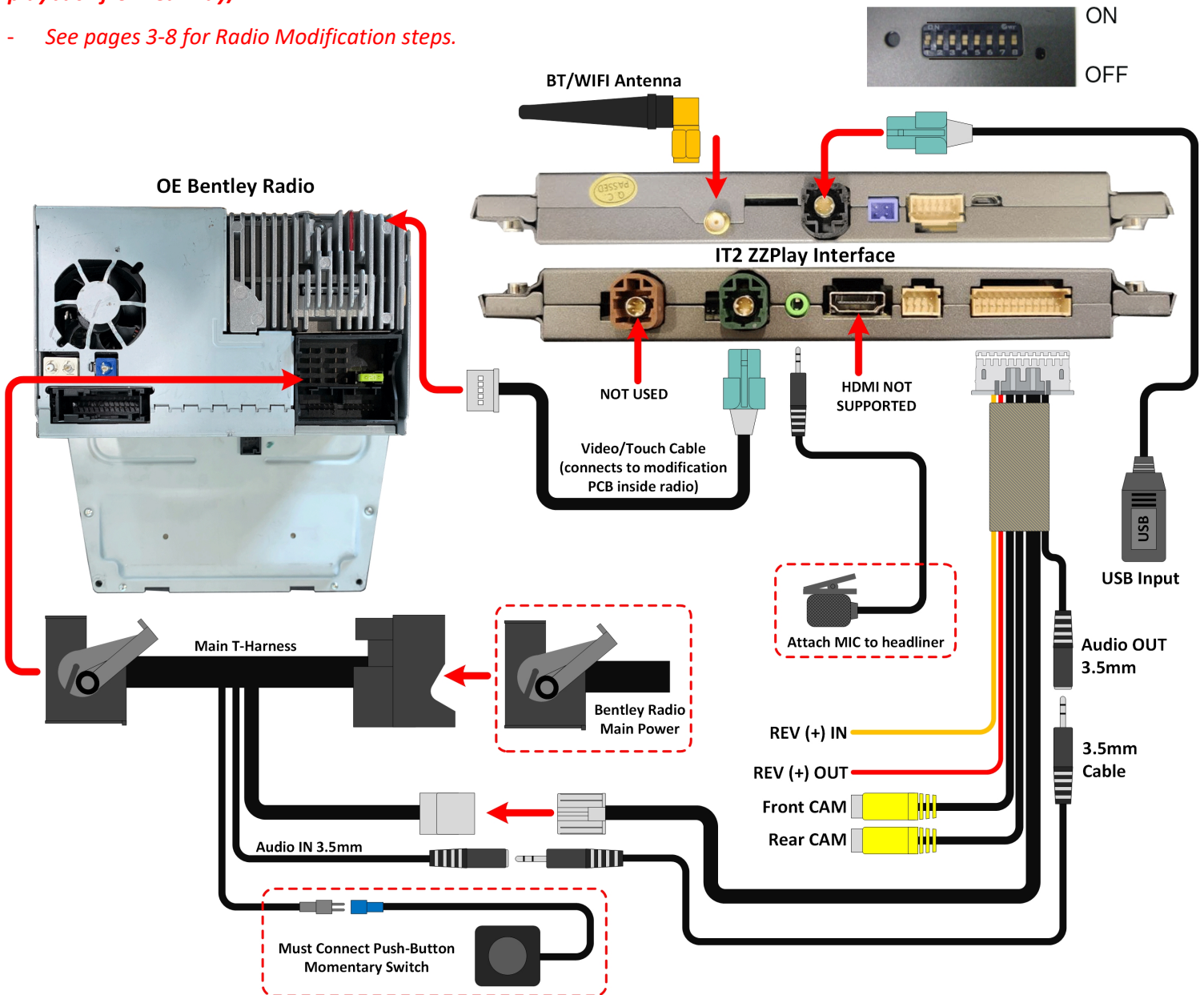


**NOTES:**

- It is recommended to use the factory Bentley bluetooth for both audio streaming and phone calls in vehicles that support it. To configure the unit properly, go into Settings>Smartphone>Turn ON 'Switch sound to phone' and select the Bluetooth Audio music source within the factory Bentley system. Otherwise the Bentley system must be in AUX Audio source mode in order to hear audio playback from CarPlay/AA.
- See pages 3-8 for Radio Modification steps.

*Dip Switch Settings – Reset power after changes (or press button fully once)*

1	OFF/ON	OFF
2	OFF/ON	ON FOR TOUCH CALIBRATION ONLY
3	OFF/ON	ON
4	OFF/ON	Camera trigger by CAN / Camera trigger by wire
5	OFF/ON	OFF
6	OFF/ON	OFF
7	OFF/ON	OFF
8	OFF/ON	Aftermarket Cam / OEM Cam



# IT2-BNT iPhone Pairing

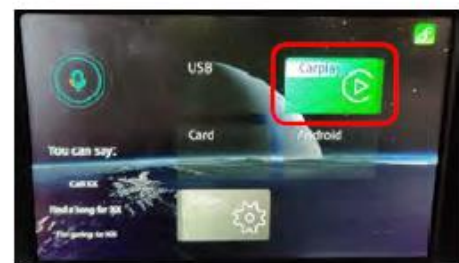


For this system, it's best to try connecting to the Phone *via the interface first*, and if its having trouble connecting, find the interface through the phone (via Bluetooth) during this operation.

1. Begin by turning Bluetooth and WIFI ON on the iPhone first  
(Settings > Bluetooth – set ON, then Settings > WIFI – set ON )
2. Next, with the interface menu screen on the radio screen (see further down document for information on switching to the interface), choose **Setup**.
3. Once in settings, swipe down to **Bluetooth**.
4. Once in 'Bluetooth', choose **Discover**.
5. Shortly after entering the 'Discover' menu, 'iPhone' should appear.

Select it, and it will ask to pair. Pair with the phone to begin the CarPlay registration process.

6. Follow the prompts on the phone to allow and use CarPlay. For a detailed step by step on this process, see the next page. Once the initial pairing is complete, CarPlay should load shortly. If not, go back to the main menu, and select 'CarPlay'.



# IT2-BNT iPhone Pairing



1. When using a USB cable to connect your iPhone, *only use a certified Apple cable.*
2. To use wireless connectivity, follow these steps:
  - a. Go to Settings > Bluetooth and the phone should be able to find a Bluetooth device called 'IDCORE' or 'ZZ2' under 'Other Devices'.

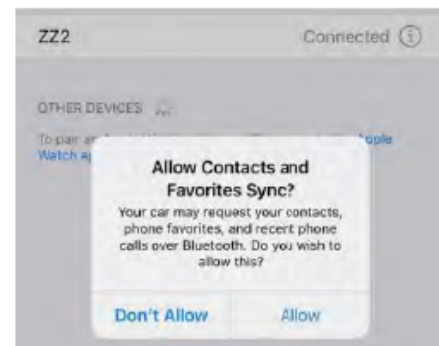
3. A Bluetooth Pairing Request will be displayed on the screen with a specific code which should match what is shown on CarPlay. Select 'Pair'. Note: following the BT connection, there is no need to try and connect WIFI manually (although it does need to be ON), after the BT connection process is complete, the WIFI will connect automatically on its own.

4. Immediately following the Pairing notification, a new request to Sync your contact with the car will be displayed. Select 'Allow' in order to have caller ID and access to your contacts through CarPlay.

5. A notification asking for a permission to connect your iPhone to the car even when the phone is locked will pop up. Select 'Use CarPlay' and the CarPlay main screen should show up on the factory radio screen. If not, press and hold the radio switching button (*HOME / INFO / GUIDE*).

**NOTE: If you're having pairing issues:**

- Perform a 'hard reset' on the phone (will not delete data) in order to prevent any malfunction: With the phone unlocked, press & release VOL+, then press & release VOL-, then press and HOLD power for 10 seconds (wait for reboot – do not touch the screen).
- DELETE ALL other 'CarPlay' devices out of the phone (delete all in 'Settings – General – CarPlay')+
- Verify 'Low Data Mode' is not enabled in phone settings.
- Verify that the antenna is not mounted behind any metal dash panels.

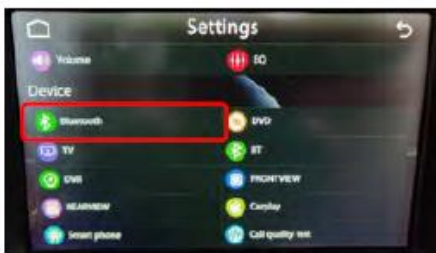


# IT2-BNT Android Pairing



For this system, it's best to try connecting to the Phone **via the interface first**, and if its having trouble connecting, find the interface through the phone (via Bluetooth) during this operation.

1. Begin by turning Bluetooth ON on the iPhone first (Settings > Bluetooth – set ON, then Settings > WIFI – set ON)
2. Next, with the interface menu screen on the radio screen (see further down document for information on switching to the interface), choose **Setup**.

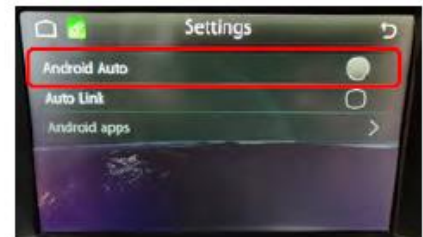
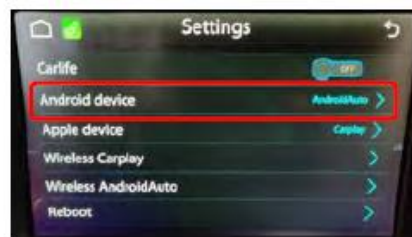
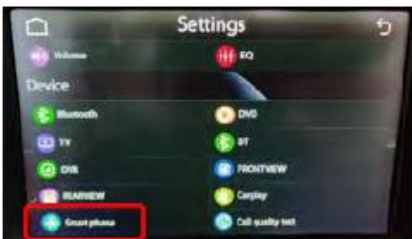


3. Once in settings, swipe down to Bluetooth.

4. Once in 'Bluetooth', choose Discover.

5. Shortly after entering the 'Discover' menu, the Android phone name should appear. Select it, and it will ask to pair. Pair with the phone to begin the Android registration process.

6. Follow the prompts on the phone to allow and use Android Auto. For a detailed step by step on this process, see the next page. Once the initial pairing is complete, Android Auto should load shortly. If not, go back to the main menu, and select 'Android'.



Inside **Setup**, swipe all the way down, press **Smart phone**

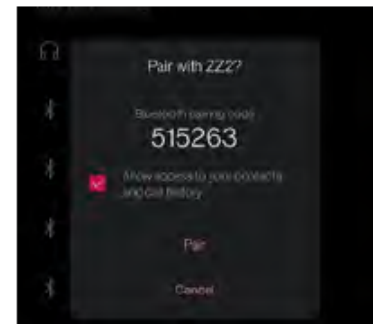
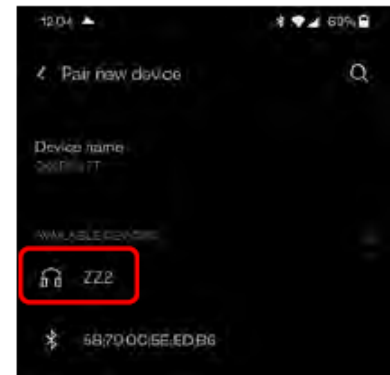
Choose **Android device**

Make sure **Android Auto** is selected. Go back to the main menu and you should be able to choose **Android Auto** now.

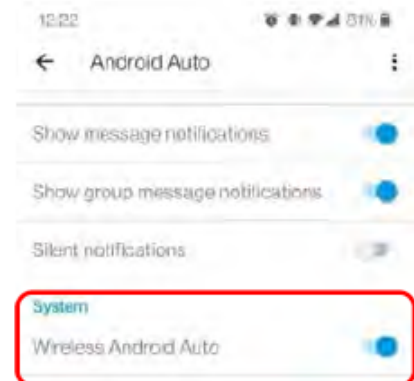
# IT2-BNT Android Pairing



1. When using a USB cable to connect your Android, only use a certified Android OE cable.
2. To use wireless connectivity (Android 11+ only), follow these steps:
  - a. Go to Settings > Bluetooth Device Connection, or LONG PRESS on the Bluetooth toggle to enter Bluetooth connections
  - b. Select 'Pair new device'
  - c. Choose 'IDCORE' or 'ZZZ'
  - d. Bluetooth Pairing Request will be displayed on the screen with a specific code. Select 'Pair'. Note: following the BT connection, there is no need to try and connect WIFI manually (although it does need to be ON), after the BT connection process is complete, the WIFI will connect automatically on its own.
  - e. Immediately following the Pairing notification, a system prompt may or may not appear for contacts sharing with the system. Allow all requests for the best user experience.
  - f. Shortly after allowing/denying pairing requests, Android Auto will appear on the main screen automatically (for most phones). If not, press & hold the switching button for 2 seconds to switch in and out of Android Auto (to OE radio mode): *HOME / INFO / GUIDE*.



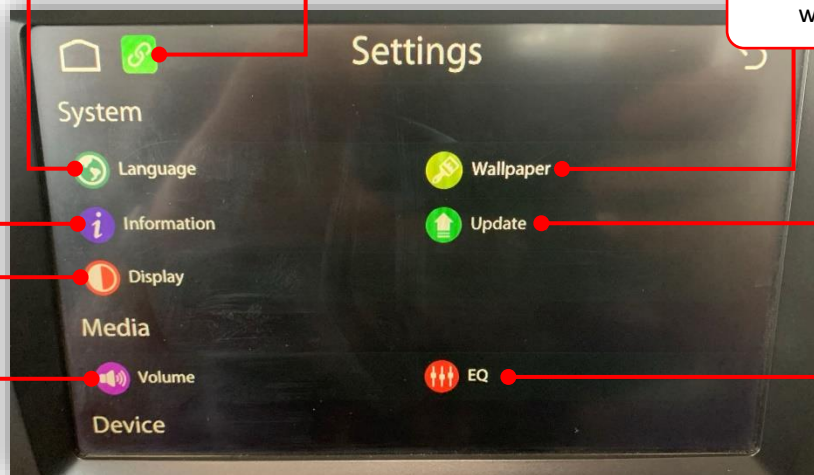
- Not every Android phone will work wirelessly. Pixel, Samsung & OnePlus devices equipped with Android 11 (or higher) have been tested to function well wirelessly. If your phone is having issues with wireless connectivity, verify with the installer that the antenna is not mounted behind any metal. If issues continue, use the original USB-C cable instead and connect to the interface's USB Input (do NOT use an aftermarket USB cable! – also, the vehicle's USB port is NOT used).
- Verify that 'Android Auto' is installed on your phone.
- Verify that in Android Auto settings (phone) that 'Wireless' is turned ON.
- Verify that WIFI is ON. The WIFI will connect automatically after Bluetooth has been properly paired.



# IT2-BNT Interface Menu Overview



To gain access to the Interface menu, start in CarPlay/AA mode, and locate the exit tile, labeled as **'Bentley' or 'VW'**. Selecting this tile will bring you in the interface setup menu, NOT the Bentley OE system.



Change language here.

Indicates a Phone is currently linked.

Change (interface) wallpaper.

Interface Version info.

System updates require access to this menu.

Display settings adjustments.

EQ setup adjustments (for AUX mode only)

Volume settings adjustments (alerts, Navigation, etc)

NOT USED in North America

Bluetooth Connection Settings for initially pairing.

NOT USED in North America

Toggle Interface Bluetooth OFF/ON here

Activate FRONT CAM toggle – if a front camera was added, turn this setting ON to view the camera at any time by pressing and holding the interface switching button (external button)  
Note: 'FRONTVIEW' must be set OFF for this feature to work.

Turns on Front Camera view for showing front camera after leaving reverse gear for ~10 seconds. NOTE: DVR must be set to 'OFF' for this feature to work.

Adjust Rearview guideline settings or turn off rearview camera entirely

Smartphone settings (general) If using Android, 'Android Device' must be set to 'Android Auto' here.

Run this call quality test with all doors closed, engine running, no phone connected for improved MIC performance.

CODE: 1123. Adjusts the vehicle MAKE ICON button – This button exits CarPlay/AA and enters you into the interface menu (this menu)

# IT2-BNT CarPlay/AA Activation

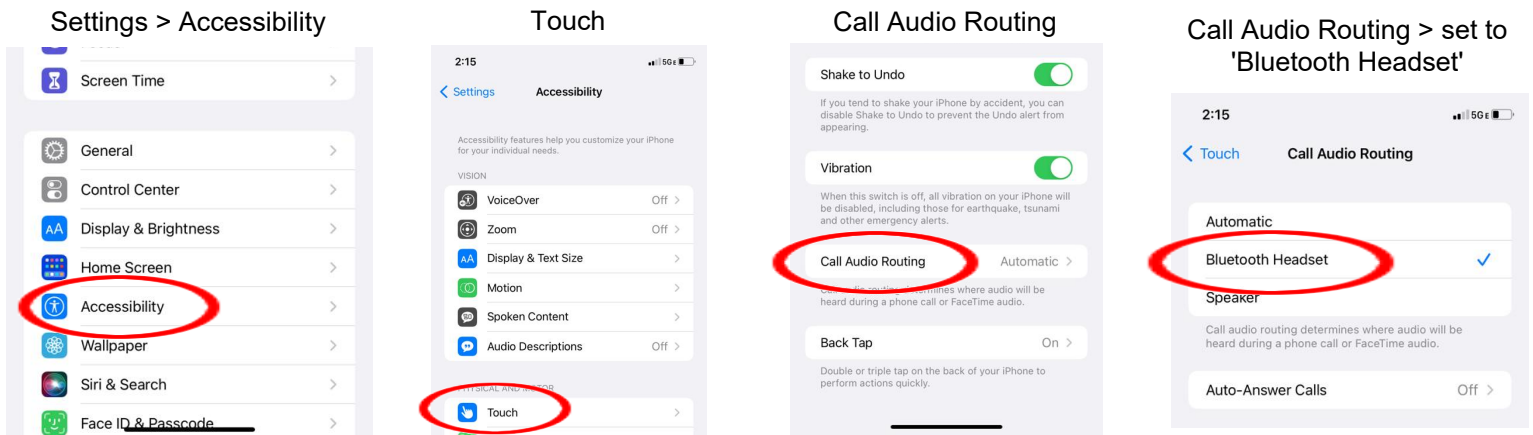


Pressing the provided push-button switch for 2 seconds will switch to CarPlay mode. Repeat to return to factory mode. This switch must be mounted somewhere on the dash within easy reach to the user.

*NOTE: Upon ignition, if a phone has already been initially paired to the system, once the phone connects the system will switch to CarPlay mode automatically.*



**CALL AUDIO ROUTING:** If using the OEM system to handle phone calls, answer incoming calls with the steering wheel. **Also if using iPhone**, set 'Call Audio Routing' to 'Bluetooth Headset' (default is 'Automatic').



To avoid distortion in audio (while on AUX mode), press 'CAR' button (hard button) > 'System Settings' > 'Media' and under 'External Audio Input', choose 'LOW'.



[support@zz-2.com](mailto:support@zz-2.com)

929-220-1212

Toll free: 877-241-2526

Extension 2: Tech Support

Agreement: End user agrees to use this product in compliance with all State and Federal laws. ZZDOIS LLC dba ZZ-2 is not to be held liable for misuse of its product. If you do not agree, please discontinue use immediately and return product to retailer. This product is intended for off-road use and passenger entertainment only.