

User Manual



Tuning Solutions



Product features

CarPlay / Android Auto

The built-in vehicle machine interaction system of iPhone cooperates with the central control knob button to provide voice command and control of phone, information, navigation, music, to operate Siri voice interaction to obtain more information; Support wireless and wired connection Carplay Android Auto. Support voice control of phone, information, navigation.

Reversing Video Input

Smart module can decode video and can be equipped with rear-view video input (The intelligent module can decode video and install rear view)

Mirroring

Supports wired & wireless mirroring functions for iphone and Android phones

USB Video Playback

Automatic media playback function, can be directly inserted into U disk to play video and audio media

Accessories



Power cable



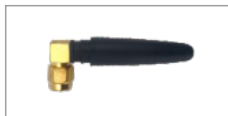
LVDS cable



Microphone cable



USB cable



Wifi antenna



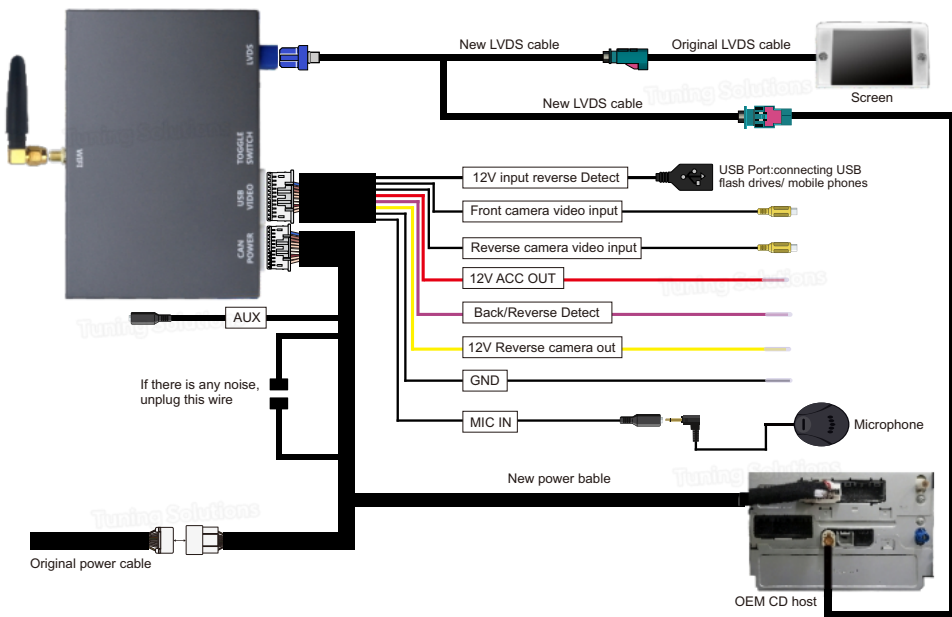
AUX cable

Compatible models and years

Compatible models and years	
	Fiat Freemont (13-14)
	Chrysler 300c (12-14)
	Dodge Challenger (13-14)
	Dodge Journey (13-16)
	Maserati Ghibli (14)
	Maserati Quattroporte (13-15)

Wiring connections

Wifi antenna (Keep away from metal)



1. The CarPlay interface decoder box should be installed in an appropriate space near or on the OEM head unit.

2. After the cables are all connected, you will be able to switch between the original screen and the CarPlay interface by long pressing the "Knob Enter" button or by long pressing top left corner (Left-hand traffic) or long pressing top right corner (right-hand traffic) on the touch screen.



3. Plug in AUX cable to OEM AUX input and switch



4.Toggle Switch Setup

1) Where to find the toggle (DIP) switches?



2) Set the toggle switch settings according to the size of your car's screen

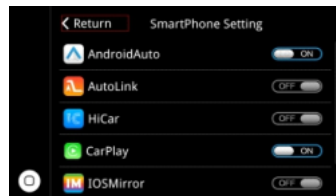
For 8.4 inch screen (640x480)

Smart Link System

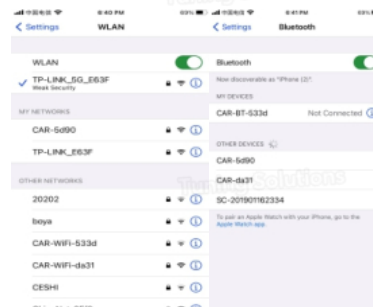
	1	2	3	4	5	6	7	8
OFF		✓	✓	✓	✓	✓	✓	✓
ON	✓							

5.Wireless CarPlay Connection Method

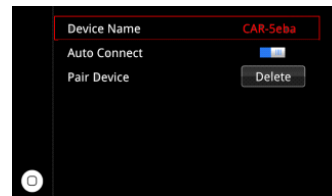
Wireless Connection Method:



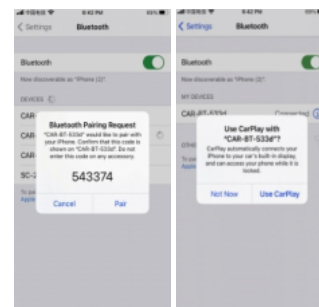
Step 1
Select "Bluetooth"



Step 3
Turn on WIFI and keep it on, then back to Bluetooth to connect CarPlay

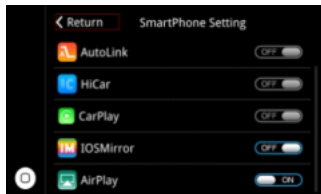


Step 2
Check the Bluetooth Device name as "CAR-xxxx"



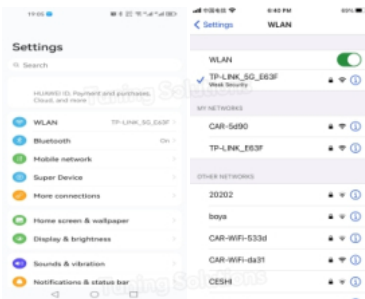
Step 4
Select Bluetooth Device name as "CAR-XXX"-Pair-Use CarPlay while that pop up a request window

6.Apple Wireless Screen Mirroring



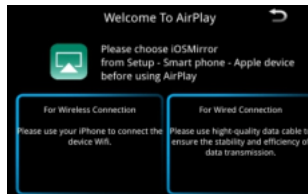
Step 1

Select "AirPlay"



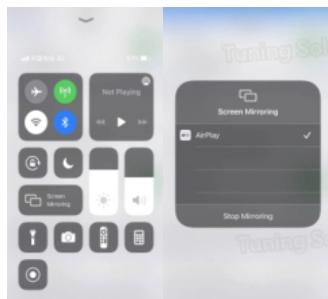
Step 3

After the WiFi connection is successful, return to the main interface of phone, open the shortcut menu page, select "Screen Mirroring" and turn on



Step 2

Turn on the phone, select the "Wireless LAN" option, the search bar will show the "CAR-WIFI-XXX" and click the link, the password is 66668888

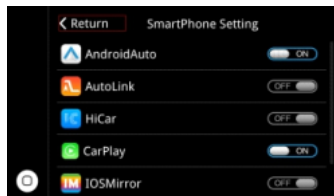


Step 4

After the mobile phone "Screen Mirroring" is turned on, select "AirPlay" to complete the wireless Screen Mirroring

7.Wireless Android Auto Connection Method

Wireless Connection Method:



Step 1

Select the "Bluetooth"



Step 3

Click on the Bluetooth name beginning with "CAR-xxx". A pairing request will pop up, just click Pairing. After the Bluetooth pairing is successful, follow the Android Auto connect process on screen.



Step 2

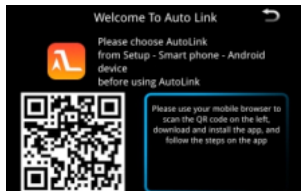
Check the Bluetooth name starting with "CAR-xxx" in the Bluetooth interface



Step 4

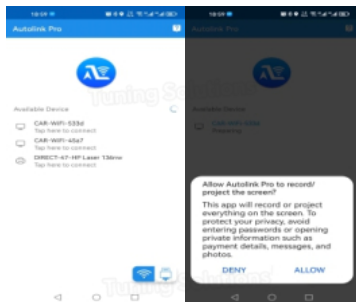
Click the Bluetooth name at the beginning of "CAR-xxx" and click pairing. Turn on the Android auto app on the mobile phone, and the system will connect automatically.

8. Android Wireless Screen Mirroring



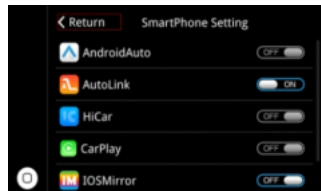
Step 1

Android phone scan and download the Auto Link by using the Browser



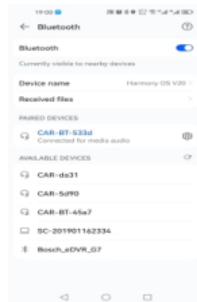
Step 3

Open the Auto link software you downloaded, search "CAR-WIFI-XXXX" and connect, then click the "START NOW" on the phone prompt box.



Step 2

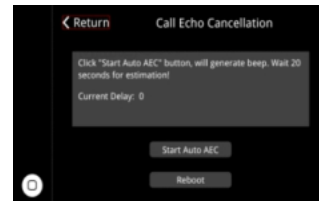
Switch the WIFI Auto Link to "ON" in the Settings page



Step 4

The media sound of AutoLink need to connect with Bluetooth.

9. Audio Settings



Call Echo Cancellation:Steps:

Settings-Audio-AEC Delay,then click the button "Start Auto AEC".

If there is an echo when in phone call. Please click this button for echo correction.When correcting the echo, we must :

1. Keep quiet in the car;
2. Turn the volume to a moderate position, and then click"Start Auto AEC".
3. Wait 20 seconds for estimation complete.